

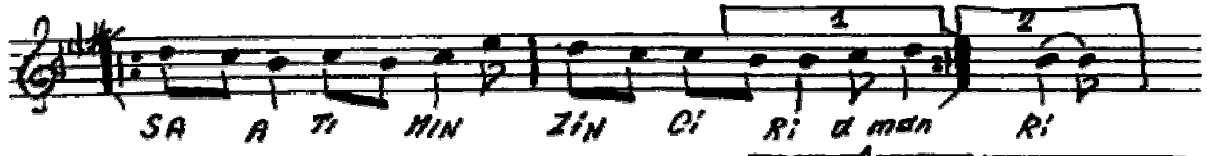
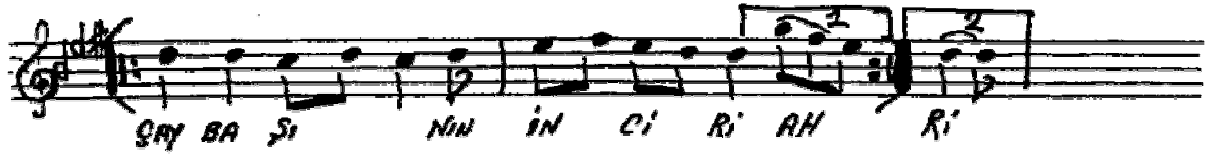
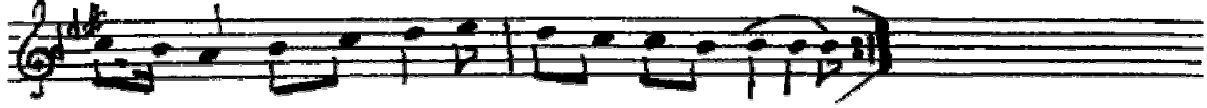
GÜMÜLCİNE TÜRKÜSÜ
ÇAY BAŞININ İNCİRİ

Derleyen: Rüştü Eriç

(D: 194)



- GİRİŞ -



Çaybaşı'nın inciri ah
Saatimin zinciri aman
Akşam oldu gelmedi ah
Koynumun güvercini aman
Hop cilveli neler alayım ah
Bir şey istemem seni sarayım aman...

24.4.1930
Zakeça