

# İSTANBUL KONSERVATUVARI

NEŞRİYATI

Türk Musikisinin Klasikleri

№ 162

ÜÇÜNCÜ SELİM  
VE  
MUSAHİP AHMET AĞA

SUZİDİLARA PEŞREVLERİ  
VE  
SAZ SEMAİSİ

KONSERVATUVARDAKİ İLMÎ HEY'ET TARAFINDAN  
TETKİK ve KABUL EDİLMİŞTİR,  
HER HAKKI MAHFUZDUR

FIATI 5 KURUŞ

SUZİDİLÂRA MAKAMINDA PEŞREV  
ÜÇÜNCÜ SELİMİN

[J. 112]

*Ser hane*

Musical notation for the *Ser hane* section, consisting of two staves. The first staff is in treble clef with a key signature of one sharp (F#) and a 2/4 time signature. The second staff is in bass clef with a key signature of one sharp (F#). The notation includes various rhythmic values and accidentals.

*Mulâxime*

Musical notation for the *Mulâxime* section, consisting of three staves. The first staff is in treble clef with a key signature of one sharp (F#). The second and third staves are in bass clef with a key signature of one sharp (F#). The notation includes various rhythmic values and accidentals.

*Orta hane*

Musical notation for the *Orta hane* section, consisting of three staves. The first staff is in treble clef with a key signature of one sharp (F#). The second and third staves are in bass clef with a key signature of one sharp (F#). The notation includes various rhythmic values and accidentals.

*Son hane*

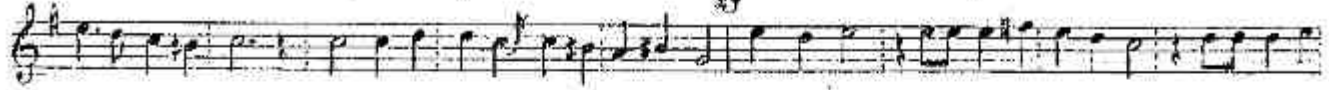
Musical notation for the *Son hane* section, consisting of two staves. The first staff is in treble clef with a key signature of one sharp (F#). The second staff is in bass clef with a key signature of one sharp (F#). The notation includes various rhythmic values and accidentals.

*Son*

Musical notation for the *Son* section, consisting of one staff in treble clef with a key signature of one sharp (F#). The notation includes various rhythmic values and accidentals.

SUZİDİLÂRA MAKAMINDA PEŞREV  
AHMET AĞANIN

[♩ = 50] *Ser hane*



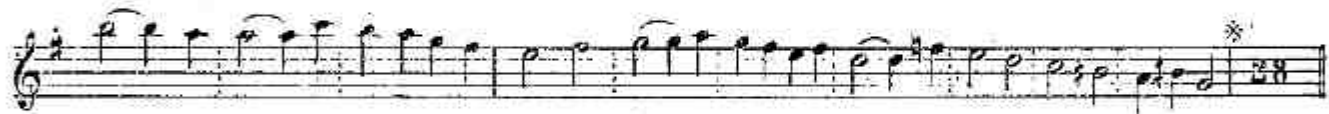
*Son*



*Mülâxime*



*Orta hane*



*Son hane*



## SUZİDİLÂRA MAKAMINDA SAZ SEMAİSİ ÜÇÜNCÜ SELİMİN

[♩=108] Ser hane

İka  
Semaî  
Serhent

Milâxime

Orta hane

Son hane  
Yürük semaî [♩=134]

### İhtarı mahsus

Kulliyatımız bu sayisi ile neşrettiğimiz iki neşre ile bir saz semaisi Türk musikisinin üçüncü Selim devrindeki asil üslubunu gösteren mühim eserlerdir. Tasnif hejeli bu eserleri odevrin musiki müelliflerinden Abdülbaki dede tarafından icad edilmiş bir Türk notasi ile yuxılmiş olarak ele geçirmiş ve bir hayli mesai sarfından sonra «deşifre» etmeğe muvaffak olmuştur. O notadan aynen tercüme ettiğimiz bu eserler bazı nazirler tarafından basılan boxuk suretlerde muhayese edilirse sazendelerimizin esläfa ait eserleri tahrisde ne dereceye kadar ileri gittikleri anlaşılmış olur.