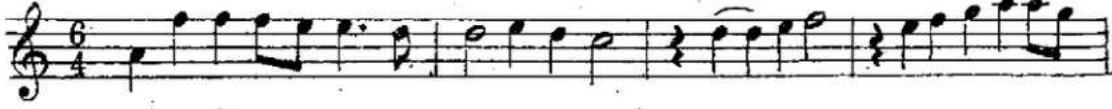


Acem makamında yürük semai

Zekai Dede

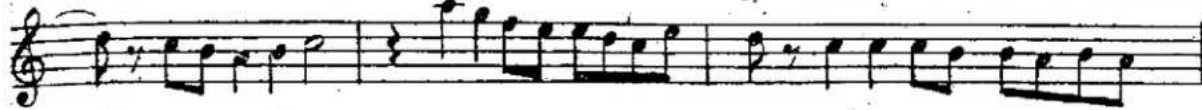
Ey büi bü li — şu — ri de gü li li — lis



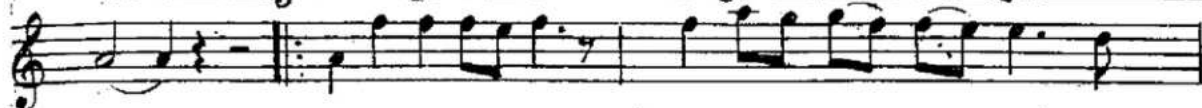
tâ — ni — ma — gir me — na li ş ge hi — mür — gi di li — na



la — la — la ni ma — gir



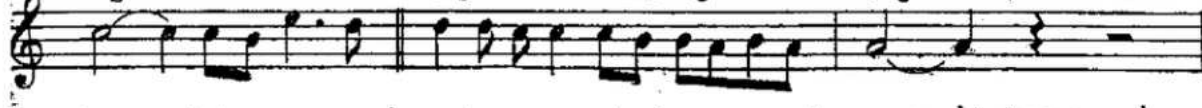
me — ca ni mi ye le — lel li ye — le — li — yel



yel lel li — ye le lel li ye le lel — li — ney — vay



vay — li ye le lel li — ney — vay



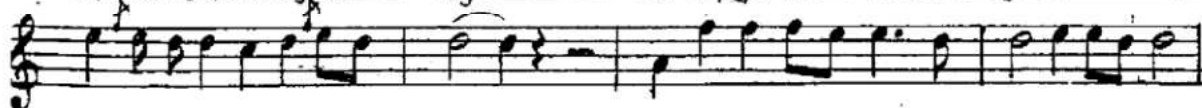
tennen ni ten — nen ni — ten — nenni te ne nen ten nenni — tennen ni —



ten nen — ni te ne nen ni te ne dil — li — ney — vay



ni te ne dil li ney — vay — na li ş ge hi — mür — gi di li — na



la — la — la ni ma gir — me



(MİYAN) geç dimse nin ey ba di saba ba ————— ba —————

ben ————— ha — be — rin ————— den ————— 1 ————— den ————— 2 —————

tek sen de va ————— rub tur ra i ————— ca ————— na —————

na ————— na ni ma gir ————— me —————

G Ü F T E S İ

Ey bülbüli şuride gülistanıma girme
 Nalişgehi mürği dili nalanıma girme
 (TERENNÜM)

Canım yele leli yeleli yel yel leli yele leli yele
 Leli ney vay (mükerrer) li yele leli ney vay
 Ten nenni ten nenni ten nenni tenenen
 Ten nenni ten nenni ten nenni tenenen
 Ni tene dilli ney vay ni tene dilli ney
 Vay nalişgehi mürği dili nalanıma girme
 (MİYAN HANE)

Geçdim senin ey badi saba ben haberinden (mükerrer)
 Tek sen de varub turrai cananıma girme
 (Terennüm evvelki gibi).