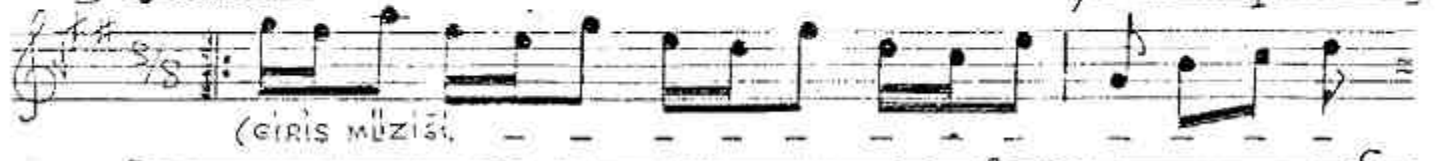


(HÜZZAM ŞARKI)
"NASIL YAŞANIR SENSİZ" BESTE: Y. MÜH. ERDOĞAN ÇERRE
GÜLTE: ÖZDEMİR KİTÇE

DÜVEK

152



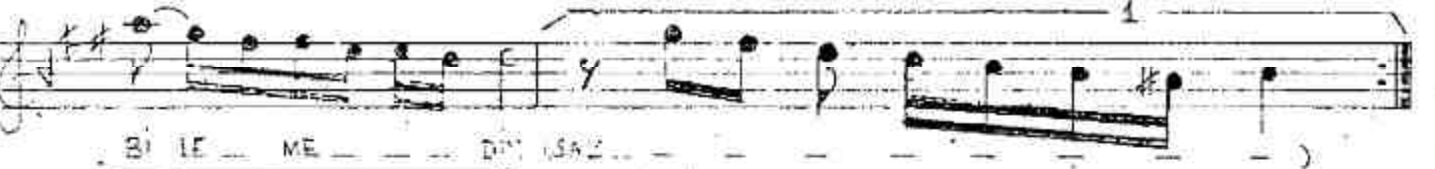
(GİRİŞ MÜZİĞİ)



NA SIL YA ŞA NIR - SEN SİZ (SAZ -) NA SIL YA ŞA NIR - SEN SİZ (SAZ -) BİR -



TÜR - LÜ BİR - TÜR - LÜ Bİ LE - ME - DİM -



Bİ LE - ME - DİM (SAZ -)



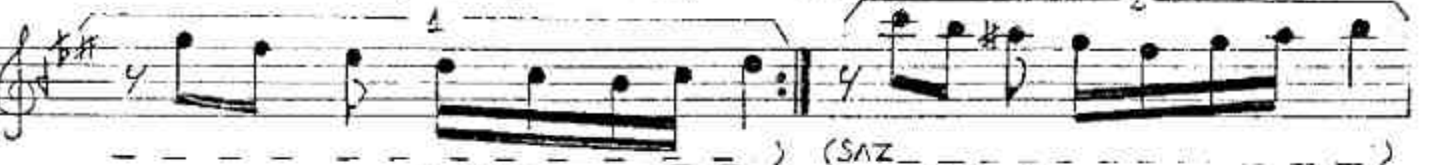
(SAZ -) GE CE GÜN DÜZ AĞ LA



DİM - AĞ LA DİM SEN SİZ HİÇ GÜ LE - ME - DİM (SAZ -)



) SEN SİZ - HİÇ - GÜ LE - ME - DİM -



(SAZ -)



DAM LA DAM LA SEN - SEN - SEN SEN - AK - TIN



SEV - Gİ LIM - GÖ Z LE RİM - DEN AH -

The image shows a handwritten musical score for the song "Nasıl Yasanır Sen'siz". It consists of four staves of music in treble clef, with a key signature of one sharp (F#) and a 4/4 time signature. The lyrics are written below the notes, with some words in parentheses indicating they are optional or part of a variation. The lyrics are: "GÖZ LE RİM DEN (SAZ SA NA NA SIL KI YA RİM KI YA RİM (SAZ) BİR TÜRLÜ Sİ LE ME DİM (SAZ) BİR TÜRLÜ Sİ LE ME DİM". The score includes various musical notations such as notes, rests, and dynamic markings.

GÖZ LE RİM DEN (SAZ
SA NA NA SIL KI YA RİM KI YA RİM (SAZ) BİR TÜRLÜ
Sİ LE ME DİM (SAZ) BİR TÜRLÜ
Sİ LE ME DİM

"NASIL YASANIR SEN'SİZ"

NASIL YASANIR SEN'SİZ BİR TÜRLÜ BİLEMEDİM
GECE GÜNDÜZ AĞLADIM SEN'SİZ HİÇ GÜLEMEDİM
~~DAMLA DAMLA SEN AKTIN SEVGİLİM GÖZLERİME~~
~~SANA NASIL KIYARIM BİR TÜRLÜ SİLEMEDİM~~