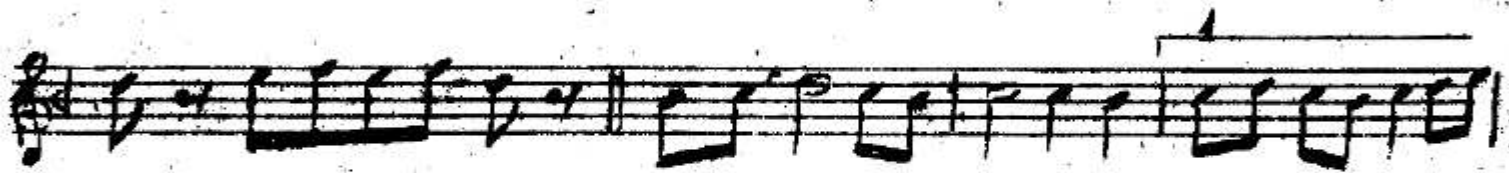


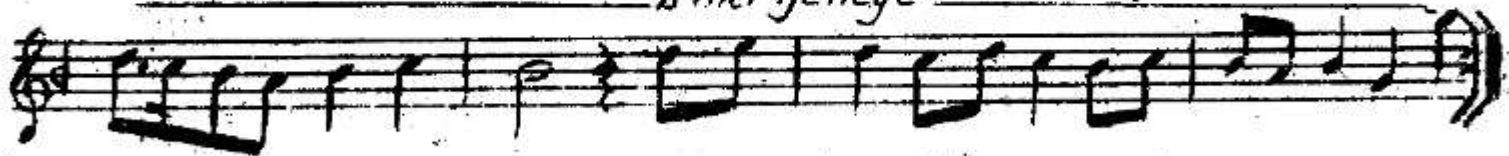
ACEM MAKAMINDA PEŞREV

Devr-1 Kebir

I.



2. mei Hâneye



→ 2.1

Acem Peğrevin devamı

2. Hane

The second staff system consists of four staves of music. The first staff begins with a treble clef and a key signature of one flat (B-flat). The music is written in a rhythmic style characteristic of Acem Peğrevi, featuring eighth and sixteenth notes. The second and third staves continue the melodic line. The fourth staff concludes with a double bar line and a fermata over the final note.

3. Hane

The third staff system consists of seven staves of music. The first staff begins with a treble clef and a key signature of one flat. The notation includes many accidentals, specifically flats, which are handwritten above the notes. The music continues across seven staves, ending with a double bar line and a fermata.



Acem peşrevin devamı

.3.

