

DÜYEN

(MEHTER)

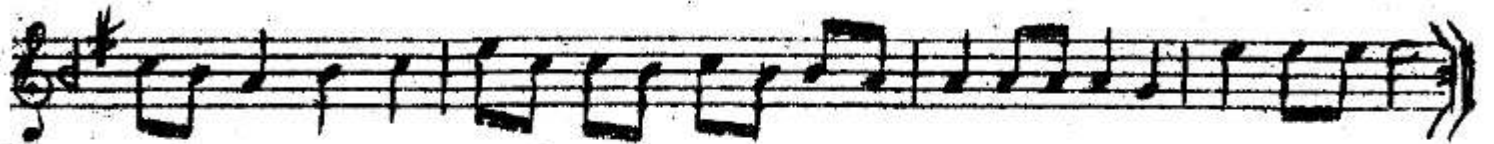
HÜSEYİNİ

Nº 1

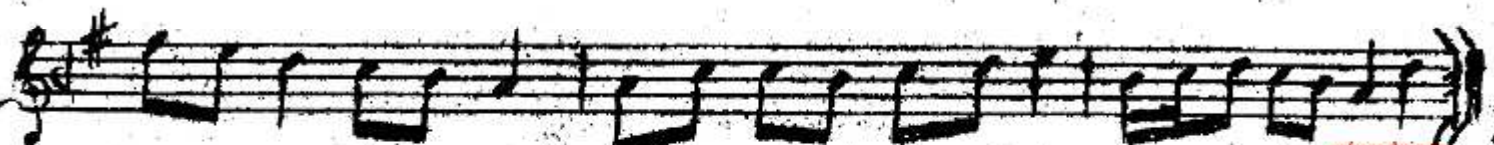
Sahibi Hasan Can

Ali Ufkü Külliyyatin den
alınmıştır, XV asır.

Birinci hane (D: 4/8)

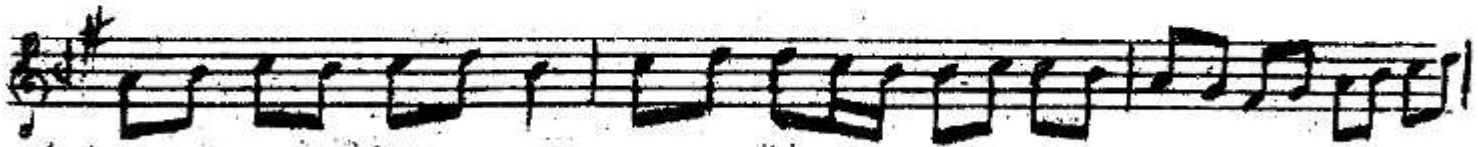


Teslin



Hüseyinî (MEHTER)

R.



Son.



İkinci hane'

The second hane' section consists of five staves of music. The first staff begins with a treble clef, a key signature of one sharp (F#), and a 2/4 time signature. The music is written in a single melodic line with various rhythmic values including eighth and sixteenth notes. The section concludes with a double bar line and a repeat sign.

Üçüncü Hane

The third hane section consists of five staves of music. The first staff begins with a treble clef, a key signature of one sharp (F#), and a 2/4 time signature. The music is written in a single melodic line with various rhythmic values including eighth and sixteenth notes. The section concludes with a double bar line and a repeat sign.

Not: Hasan Can Çaldıran seferinden sonra
Yavuz Sultan Selim tarafından İstanbul
getirilmiş ve Padişahın Nedirî olmuştur.
Padişahın ölümlünde başı ucunda bulmuş