

Zâvil İlâhi

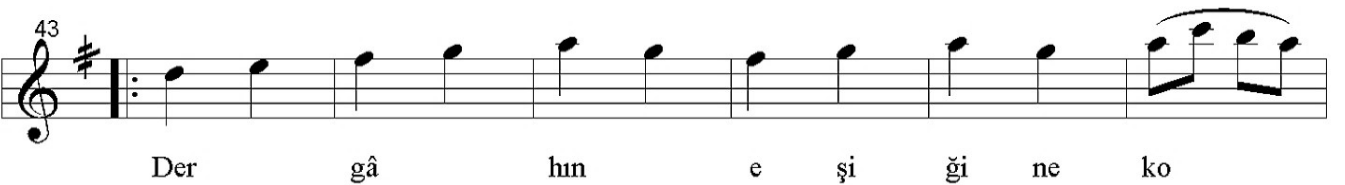
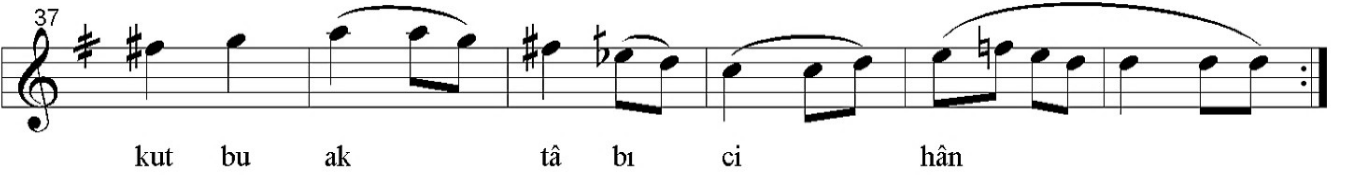
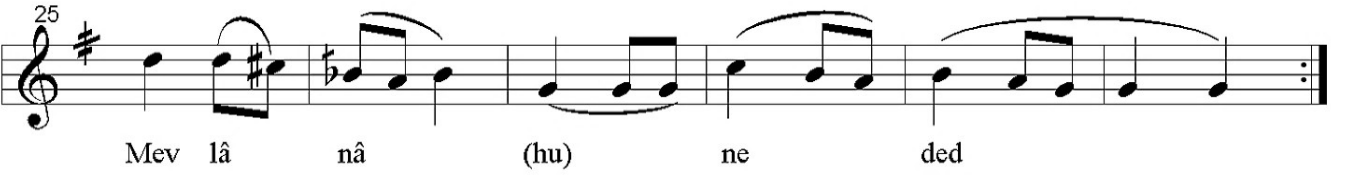
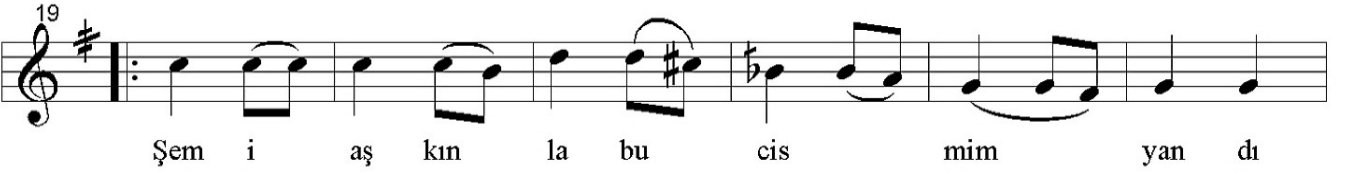
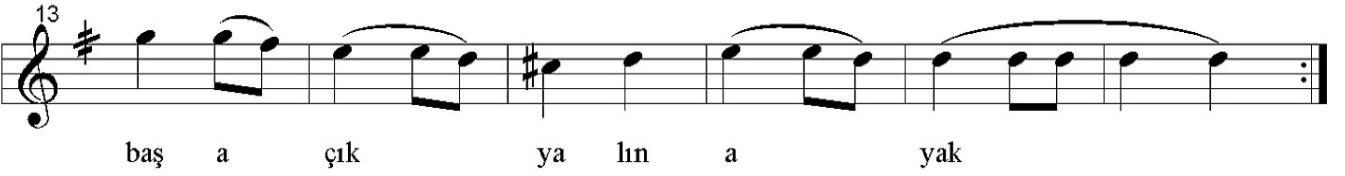
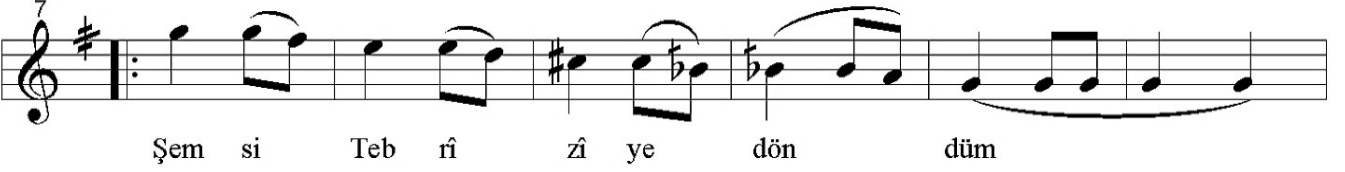
"Şems-i Tebrîzî'ye döndüm"

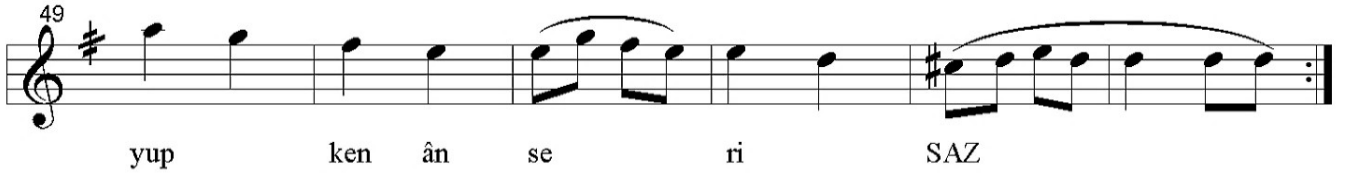
Usul: Sofyan

100

Güfte: Kenân Rifâî

Beste: Cemil Altınbilek





*Şems-i Tebrîzî'ye döndüm, baş açık yâlin ayak
Şem-i aşkınla bu cismim yandı, Mevlânâ meded
Dâimâ pevânenim ey kutb-i aqtâb-ı cihân
Dergeh-i lutfun eşîğine koyup Ken'ân seri
Yalvarır ağlar demâdem, der şefâat el amân*

*Şem-i aşk: aşk ateşi
Kutb-i aqtâb: kutupların kutbu*