

Nim Sofyan

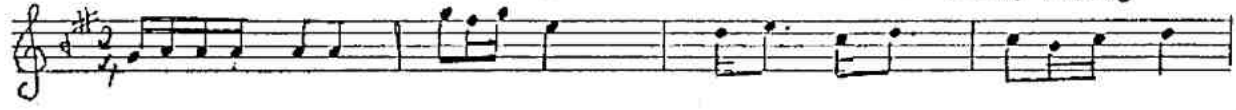
Süre: 3
♩ = 80

HÜSEYİNİ ŞARKI

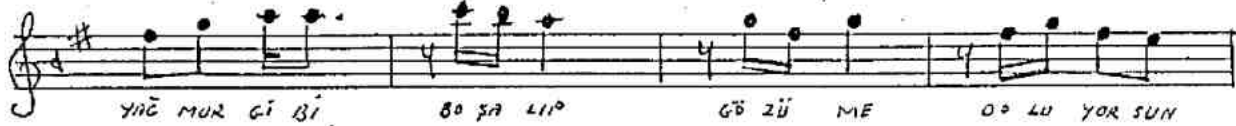
(Toprak gibi islanıp)

BESTE: KALKI DİĞİRMAN

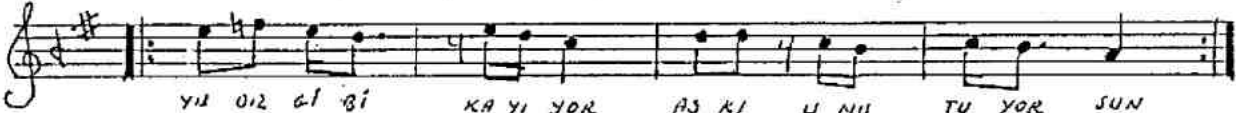
Söz: BEKİR MUTLU



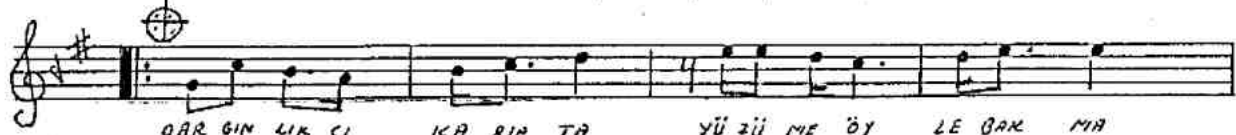
TOP RAK Gİ Bİ İS LA NIP HEP HAS KET KO KU YOR SUN



YÜ MÜR Gİ Bİ BO ŞA LIP GÖ ZÜ ME DO LU YOR SUN



YU OZ Gİ Bİ KA YI YOR. AŞ KI U NU TU YOR SUN



ÖZ GİN LİK Şİ KA RIP TA YÜ ZÜ ME ÖY LE BAK MA



BEN SEN SİZ YA ŞA YA NIP BİR NA ŞI MA Dİ RAK MA



RÜZ GAR Gİ Bİ E Sİ YOR GÖN LÜ ME DO LU YOR SUN



GÜ NEŞ Gİ Bİ DO ĞU YOR U MU DUM O LU YOR SUN



BA ZEN YÜ ZÜ ME GÜ LÜP SE VİN CE BO ĞU YOR SUN