

NİHÂVEND ŞARKI

USÛLÜ : SERBEST

YANIMDA KAL GİTME SAKIN BU GECE

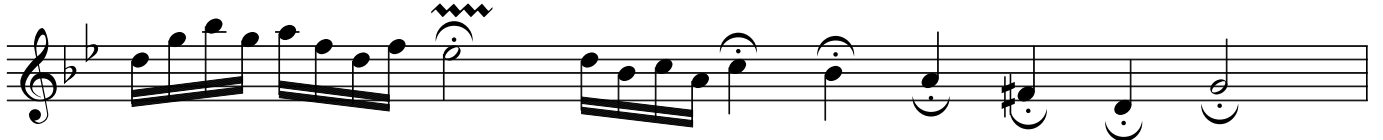
DÜYEK

MÜZİK : PINAR KÖKSAL

SÖZ : ALİ OSMAN YILMAZ



ARANAĞME



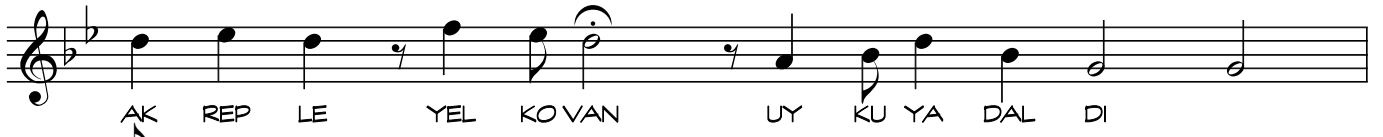
YANIM DA KAL GİT ME SAKIN BU GE CE (SAZ) (SON)



İ Çİ Mİ BE LİR SİZ BİR KOR KU SAR DI (SAZ)



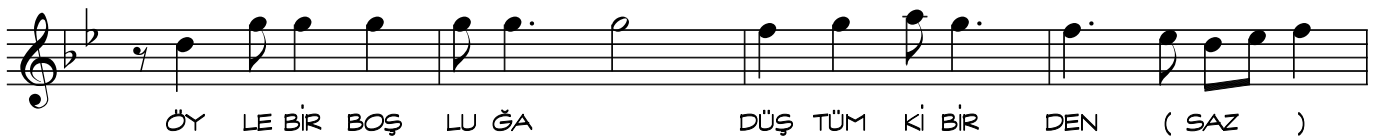
ZA MÂ Nİ DUR DUR DUM SA A TEBAK MA (SAZ)



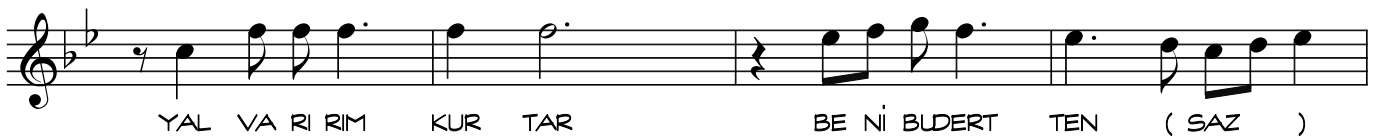
AK REP LE YEL KOVAN UY KU YA DAL DI



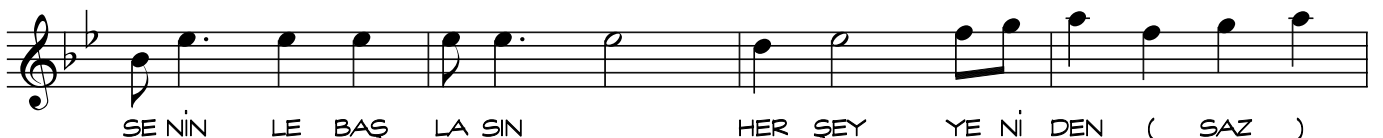
(SAZ)



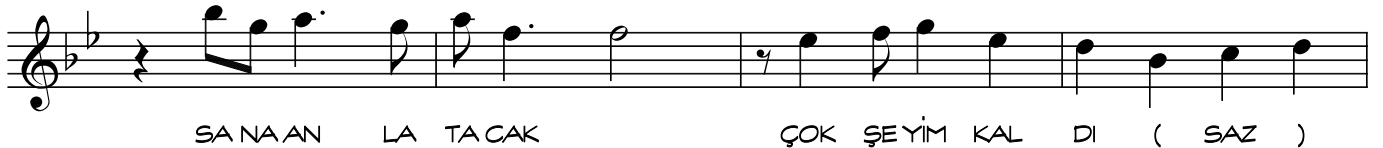
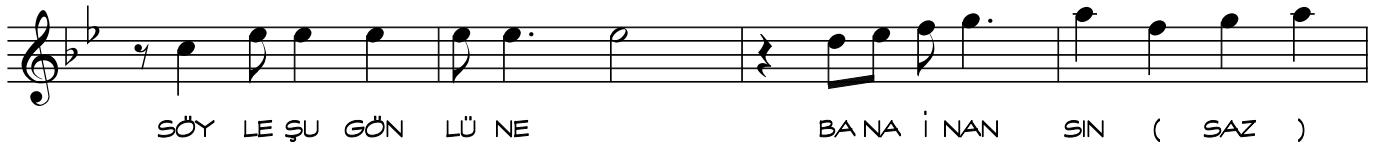
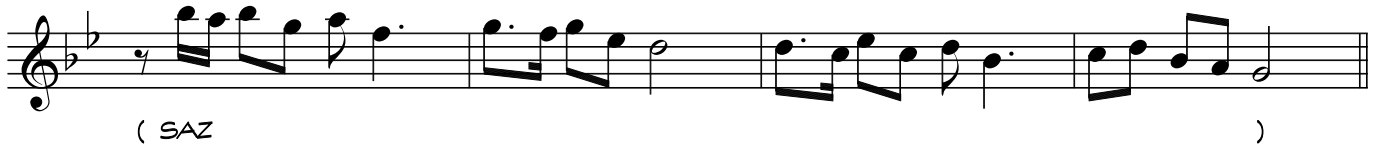
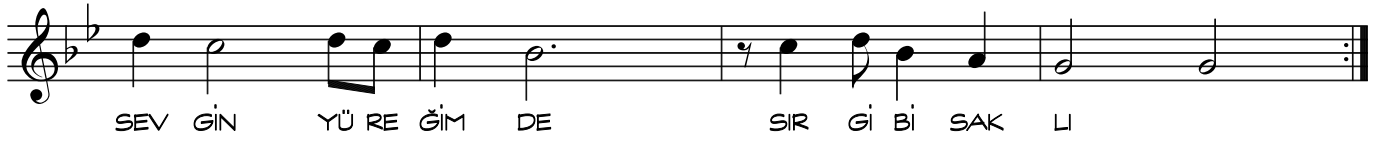
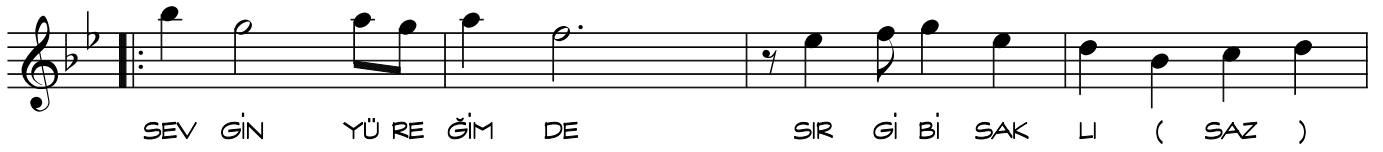
ÖY LE BİR BOŞ LU ĞA DÜŞ TÜM Kİ BİR DEN (SAZ)



YAL VA Rİ RİM KUR TAR BE Nİ BLDERT TEN (SAZ)



SE NİN LE BAŞ LA SIN HER ŞEY YE Nİ DEN (SAZ)



YANIMDA KAL GITME SAKIN BU GECE
İÇİMİ BELİRSİZ BİR KORKU SARDI
ZAMÂNİ DURDURDUM SAATE BAKMA
AKREPLE YELKOVAN UYKUYA DALDI

ÖYLE BİR BOŞLUĞA DÜŞTÜM Kİ BİRDEN
YALVARIRIM KURTAR BENİ BU DERTTEN
SENİNLE BAŞLAŞIN HER ŞEY YENİDEN
SEVGİN YÜREĞİMDE SIR GİBİ SAKLI

TELEFONU AÇMA ÇALARSA ÇALSIN
SÖNDÜR İŞIKLARI YALNIZ MUM YANSIN
SÖYLE ŞU GÖNLÜNE BANA İNANSIN
SANA ANLATAÇAK ÇOK ŞEYİM KALDI

faruk bahin